

## Product Information

### KNX Smart Meter Water Meters



#### KNX Smart Water Meters

Lingg&Janke cold / hot water metering solutions are based on water meters of the manufacturers Andrae, Hydrometer and Sensus for which we provide the appropriate KNX interfaces.

Andrae and Sensus water meters are mechanical meters that have their own interface for transmitting data to the KNX module. The Lingg&Janke KNX module is installed in an external surface-mounting enclosure.

All meters of Hydrometer manufacture offered by Lingg&Janke are electronic vane-type water meters with integrated LCD display and data interface. The electronic counter guarantees long-term transmission reliability. The Lingg&Janke KNX module is installed in an external surface-mounting enclosure.

The integrated KNX/EIB module stores the measured data every 15 minutes over a period of one year and provides full FacilityWeb capability. Every meter has its own home page. The meter readings can be read out directly via a network coupler using a standard Internet browser, or transmitted for further processing and billing purposes using FTP.

Consistent communication based on the TCP/IP and KNX protocol is the key to fast and cost-effective acquisition of operating and energy consumption data.

- Full FacilityWeb functionality
- Minimum power consumption
- Integrated data logger with storage capacity for one year's consumption data
- HTTP protocol
- Compliant with MID requirements

## KNX-Water Meters

### Description

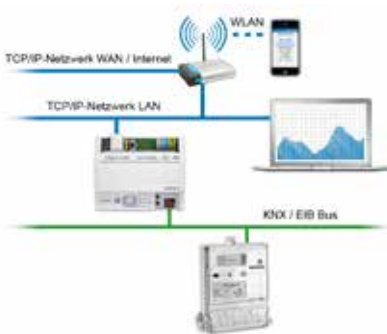
All mechanical water meters are equipped with a cyclometer-type counter mechanism. Counter changes are continuously transmitted via a pulse disk to a fitted interface that reproduces the mechanical meter reading. It is this reproduced meter reading that is read out by the KNX module.

The electronic water meters are already equipped with an electronic register that can be directly read out by the KNX module. Since there is no pulse loss, these meters provide complete transmission reliability.

### Smart Green Metering

Lingg&Janke's KNX water meters are energy efficient devices. With a power consumption of only 0.6 W, our meters offer the full spectrum of intelligent metering functions.

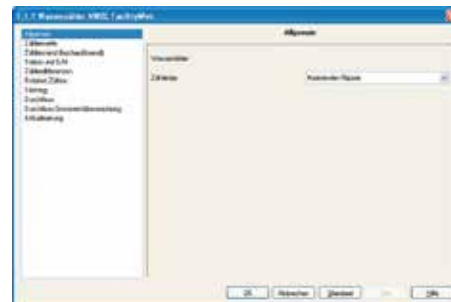
### Storage of Consumption Data



The integrated KNX data logger stores the data at 15 minute intervals over a period of one year. The data can be read out directly via the NK-FW network coupler using a standard Internet browser. By using FTP, you can also download the stored data from the KNX/EIB module for further processing, for example with MS Excel or Flash / Silverlight. The application program offers 21 data points for further processing in the KNX/EIB bus. The individual data can be transmitted cyclically to the KNX bus.

The consistent connection of the meters implemented through our NK-FW coupler is the basis for fast and cost-effective acquisition of operating data from a central point over a network / router.

### Parameter Setting



The available parameters allow you to define the following outputs:

- (type dependent)
- Meter value (m<sup>3</sup>)
  - High-resolution meter value (l)
  - Meter status
  - Serial number and meter number
  - Relative up counter Meter value / Reset
  - Relative down counter Meter value / Reset / Zero
  - Output 15min / 60min difference (m<sup>3</sup>)
  - Due date billing Date / Set
  - Output Flow rate
  - Limit monitoring Flow rate 2 thresholds each

water Meter		Serial no.	003448610
hydrometer Flypfer		Meter	003448610
		Phys. Addr.	01.02.035
1:	Volume (m <sup>3</sup> )		
2:	Volume (l)		
3:	rel. forward counter (m <sup>3</sup> )		
4:	rel. reverse counter (m <sup>3</sup> )		
5:	1/2h diff. volume (l)		
6:	1/2h max. flow (l/h)		
7:	meter status (code, lock)		
16.01.11	00:00	0000186	0186137
16.01.11	00:15	0000186	0186137
16.01.11	00:30	0000186	0186137
16.01.11	00:45	0000186	0186137
16.01.11	01:00	0000186	0186137
16.01.11	01:15	0000186	0186137
16.01.11	01:30	0000186	0186137
16.01.11	01:45	0000186	0186137
16.01.11	02:00	0000186	0186137
16.01.11	02:15	0000186	0186137
16.01.11	02:30	0000186	0186137
16.01.11	02:45	0000186	0186137
16.01.11	03:00	0000186	0186137
16.01.11	03:15	0000186	0186137
16.01.11	03:30	0000186	0186137
16.01.11	03:45	0000186	0186137
16.01.11	04:00	0000186	0186137
16.01.11	04:15	0000186	0186137
16.01.11	04:30	0000186	0186137
16.01.11	04:45	0000186	0186137
16.01.11	05:00	0000186	0186137
16.01.11	05:15	0000186	0186137
16.01.11	05:30	0000186	0186137
16.01.11	05:45	0000186	0186137
16.01.11	06:00	0000186	0186137
16.01.11	06:15	0000186	0186137
16.01.11	06:30	0000186	0186137
16.01.11	06:45	0000186	0186137
16.01.11	07:00	0000186	0186137
16.01.11	07:15	0000186	0186137
16.01.11	07:30	0000186	0186137
16.01.11	07:45	0000186	0186137
16.01.11	08:00	0000186	0186137
16.01.11	08:15	0000186	0186137
16.01.11	08:30	0000186	0186137
16.01.11	08:45	0000186	0186137
16.01.11	09:00	0000186	0186137
16.01.11	09:15	0000186	0186137

### Technical Data

#### Andrae cold water / hot water meters



Single-jet dry runner

Measuring range 1.5-2.5 m<sup>3</sup>/h

Other techn. data, see: [www.lingg-janke.de](http://www.lingg-janke.de)

#### Andrae residential water meter MTK-HWX



Multi-jet dry runner

Measuring range 2.5-10 m<sup>3</sup>/h

Other techn. data, see:

[www.lingg-janke.de](http://www.lingg-janke.de)

#### Electronic water meter Corona E



Full electronic water meter

Installation size GA DN25

Measuring range 1.5-2.5 m<sup>3</sup>/h

Other techn. data, see:

[www.lingg-janke.de](http://www.lingg-janke.de)

#### Ring piston water meters



Dry runner with shielded magnetic coupling

Measuring range 2.5 m<sup>3</sup>/h

Other techn. data, see:

[www.lingg-janke.de](http://www.lingg-janke.de)

#### Single-jet domestic water meter



Dry runner with shielded magnetic coupling

Measuring range 1.5-2.5 m<sup>3</sup>/h

Other techn. data, see:

[www.lingg-janke.de](http://www.lingg-janke.de)